

# Welcome to Kids Corner!

Sunday, March 10, 2024

## THE WIDOW'S GIFT

Mark 12:28-44

### Key Verse:

“You shall love the Lord your God’...[and]...‘You shall love your neighbor as yourself.’ There is no other commandment greater than these.”

Mark 12:30-31

### The Point:

We respond to God’s love and faithfulness by giving our lives to God.

### Making Connections:

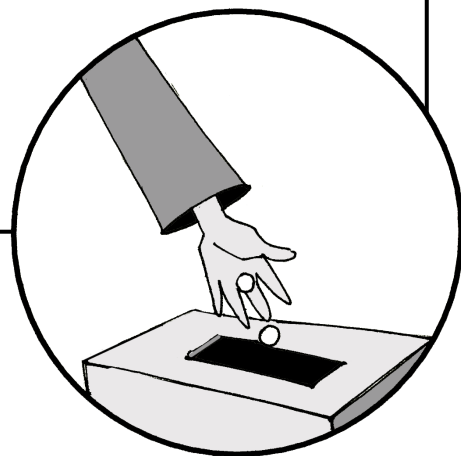
The Call to Serve

### Bible Nuts & Bolts:

What Was the Temple?

### Spiritual Practice:

Service



---

---

# BACKGROUND

## Making Connections

Jesus has entered Jerusalem in triumph, gone to the temple and cleansed it, and is in continuing conflict with the religious leaders of Jerusalem. While in Jerusalem, Jesus is sitting outside the temple treasury with his disciples, observing people giving to the glory of God when he sees the widow donate her precious coins to the treasury. She gives all that she has as she responds to God's call.

## Story Summary:

### *The Widow's Gift*

The story of the day will reference the greatest commandment of all—to love God with all your heart, soul, mind, and strength. Illustrating this story is the widow who gives her few coins to the temple treasury with a faithful spirit of generosity. The temple treasury was a collection of thirteen chests in the temple where worshippers would give money to the glory of God. Jesus and his disciples watched rich men give many coins to the treasury, but it is when Jesus sees the widow offer her few coins that he is most affected. Because of the generous and selfless nature of her gift, Jesus holds her up as an example for us all to follow.

## The Point

**We respond to God's love and faithfulness by giving our lives to God.** Just as the widow gave all she could, so too can we give generously of ourselves to God. We can follow the widow's example and give selflessly and faithfully no matter how our gift compares in relation to the gift of others. This is true not just in terms of monetary gifts, but also in gifts of time and service. This is in reminiscent of a quote often attributed to Mother Teresa, "Not all of us can do great things. But we can do small things with great love."

## Bible Nuts & Bolts:

### *What Was the Temple?*

According to the Bible, King Solomon built the temple as a replacement of the tabernacle. The tabernacle was a portable worship tent created while the Israelites wandered the wilderness. King Solomon wanted the temple to be a permanent and central place of worship. The temple was built around 950 BCE. This temple was destroyed by the Babylonians in 586 BCE. The temple would eventually be rebuilt, only to be destroyed again by the Romans in 70 CE.

The temple was very different from Christian churches. The temple was not just a religious building. It was also a cultural and political place. The temple was seen as God's house and was treated with utmost respect. The temple also served as a financial center for Jerusalem, similar to a bank. It provided loans, money exchanging services, and helped in collecting taxes .

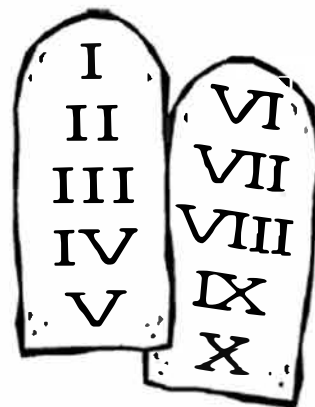
## Spiritual Practice: Service

Service involves giving all that we have: our time, our possessions, and our talent. It does not matter how much of each we have to give. What matters is that we are willing to share those things that we do have to help the people around us.

# The Greatest Commandment

"Love the Lord your God with all your heart and with all your soul and with all your mind and with all your strength.' The second is this: 'Love your neighbor as yourself.'" Mark 12:30-31 (NIV)

The puzzle is based on Mark 12:28-34



R S Q E M D D G J E Q G I K K  
 R T B F W B U V R I K C D P I  
 V R B S E C O N D E M C E Y N  
 A E J D B K S C B L A A F C G  
 M N X P R M O V M N T T G C D  
 E G S Y V A U P I H E G E P O  
 P T H W L X L P N C A Y X S M  
 A H Q X E E L V D M C Z O E T  
 J T C J R R H O J D H Q Y D Z  
 A M W H Y Z K X V N E H N T Y  
 R S K E N L C J L E R K I O Q  
 L A W A Y O U R S E L F Z E K  
 C R H R S N E I G H B O R E O  
 L D M T H S I M P O R T A N T  
 I P Q U E S T I O N S G Z C N

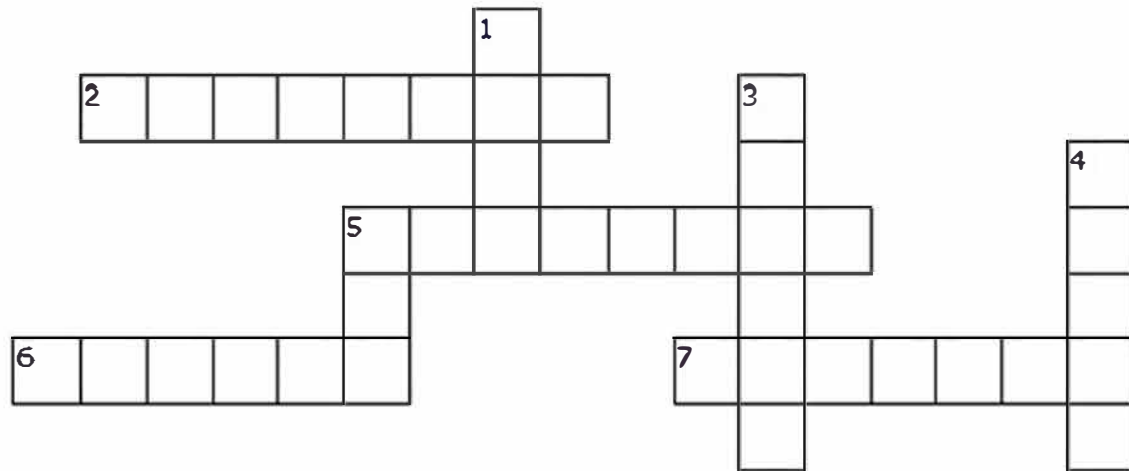
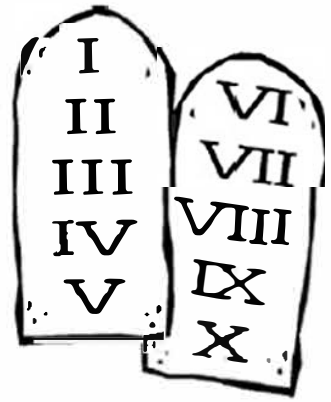
|          |           |          |         |           |
|----------|-----------|----------|---------|-----------|
| MIND     | SOUL      | YOURSELF | ANSWER  | QUESTIONS |
| NEIGHBOR | IMPORTANT | STRENGTH | TEACHER | KINGDOM   |
| GREATEST | LOVE      | LAW      | SECOND  | HEART     |

LOVE THE LORD  
YOUR GOD WITH ALL OF  
YOUR HEART <sup>and</sup> WITH ALL OF YOUR  
SOUL <sup>and</sup> WITH ALL OF YOUR  
MIND <sup>and</sup> WITH ALL OF  
YOUR STRENGTH

MARK 12:30

# The Greatest Commandment

“The first is, ‘Hear, O Israel: the Lord our God, the Lord is one;  
 30 you shall love the Lord your God with all your heart and with  
 all your soul and with all your mind and with all your strength.’  
 31 The second is this, ‘You shall love your neighbor as  
 yourself.’ There is no other commandment greater than these.”  
 Mark 12:28-34 NRSV



## ACROSS

2. A person who lives near or next to another
5. The most important; better than all others of the same kind
6. Coming next in order after the first one
7. Someone who educates or trains others

## DOWN

1. To have a deep feeling of affection or attraction for someone
3. A spoken or written reply to a question
4. The center and source of a person's emotions or feelings
5. The creator of heaven and earth; The One we worship

|          |         |          |      |
|----------|---------|----------|------|
| NEIGHBOR | TEACHER | SECOND   | GOD  |
| ANSWER   | HEART   | GREATEST | LOVE |

**The Greatest  
Commandment**



**Love the Lord  
your God  
with all your heart  
and with all  
your soul  
and with all  
your mind  
and with all  
your strength.**



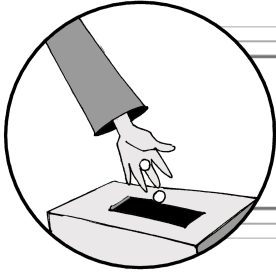
**Mark  
12:30-31**



**Love your  
neighbour  
as yourself.**

**There is no  
commandment  
greater  
than these.**





# THE STORY @ HOME

**KIDS  
3RD-6TH**

**NL**

Mark 12:28-44

## LAST WEEK

Jesus has arrived in Jerusalem, and is teaching in the temple. The religious leaders confront him there with questions meant to trap him (Mark 12:1-12 [13-17]).

## THIS WEEK

Jesus teaches in the temple about loving God and loving neighbor. He then criticizes those who make a show of their giving and praises the widow who is willing to give all that she has to God's kingdom (Mark 12:28-44).

## STORY SUMMARY

### The Widow's Gift

Today's story centers on the widow who gives her few coins to the temple treasury with a faithful spirit of generosity. The temple treasury was a collection of thirteen chests in the temple where worshippers would give money to the glory of God. Jesus and his disciples watched rich men give many coins to the treasury, but it is when Jesus sees the widow offer her few coins that he is most affected. Because of the generous and selfless nature of her gift, Jesus holds her up as an example for us all to follow.

## PRACTICE SERVICE

Service involves giving all that we have: our time, our possessions, and our talent. It does not matter how much of each we have to give. What matters is that we are willing to share those things that we do have to help the people around us. Continue your plans for the service project that you committed to earlier this month. This is the last week to focus on this project.

## NEXT WEEK

As Jesus draws nearer to the end of his earthly ministry, his teachings become more direct and strongly worded. He warns about both the destruction of the temple and the Day of the Lord (Mark 13:1-8, 24-37).

## THE POINT

We respond to God's love and faithfulness by giving our lives to God.

## BIBLE NUTS & BOLTS

### *What Was the Temple?*

According to the Bible, King Solomon built the temple as a replacement of the tabernacle, a portable worship tent created while the Israelites wandered the wilderness. Solomon wanted the temple to be a permanent and central place of worship. The temple was built around 950 BCE. This temple was destroyed by the Babylonians in 586 BCE. The temple would eventually be rebuilt, only to be destroyed again by the Romans in 70 CE. The temple was very different from Christian churches. The temple was not just a religious building. It was also a cultural and political place. The temple was seen as God's house and was treated with utmost respect. The temple also served as a financial center for Jerusalem, similar to a bank. It provided loans, money-exchanging services, and helped in collecting taxes.

## Family Discussions

Use the questions below or other questions you think of to discuss today's Scripture reading (listed above) with your family.

- ✝ In what way does this text teach about the theme The Call to Serve?
- ✝ What does this Scripture have to do with our lives today?
- ✝ What part of this Scripture is the most interesting to you? Why?

## Family Devotions

As you hear and study these stories each week, consider what God has to say to you and your family. What is God's message to us? How should we respond?

### Sunday—Read Mark 12:41-44

The widow's gift.

Find change in your room, car, or pocket. Put it all in a pile, and donate it the next time you are at church.

### Monday—Read Mark 13:1-8

Wars and rumors of wars.

There are—and always have been—wars and destruction. Say a prayer together for people who live in areas affected by these disasters.

### Tuesday—Read Mark 13:9-13

Hard times to come.

Talk about one thing that helps you cope with difficult times.

### Wednesday—Read Daniel 11:29-35

A desolating sacrilege.

Share your favorite thing about your church.

### Thursday—Read Mark 13:21-23

False messiahs.

Talk about one trait that Jesus has that tells you that he is the true Messiah.

### Friday—Read Daniel 7:9-14

The Son of Man has dominion.

Draw a picture of this passage. Keep it for tomorrow.

### Saturday—Read Mark 13:24-27

The Son of Man comes.

Draw a picture of what it might look like when Jesus comes again. Compare it with yesterday's drawing. How are they the same? How are they different?